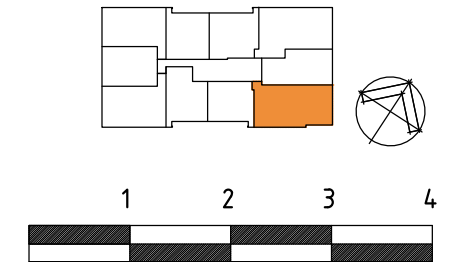
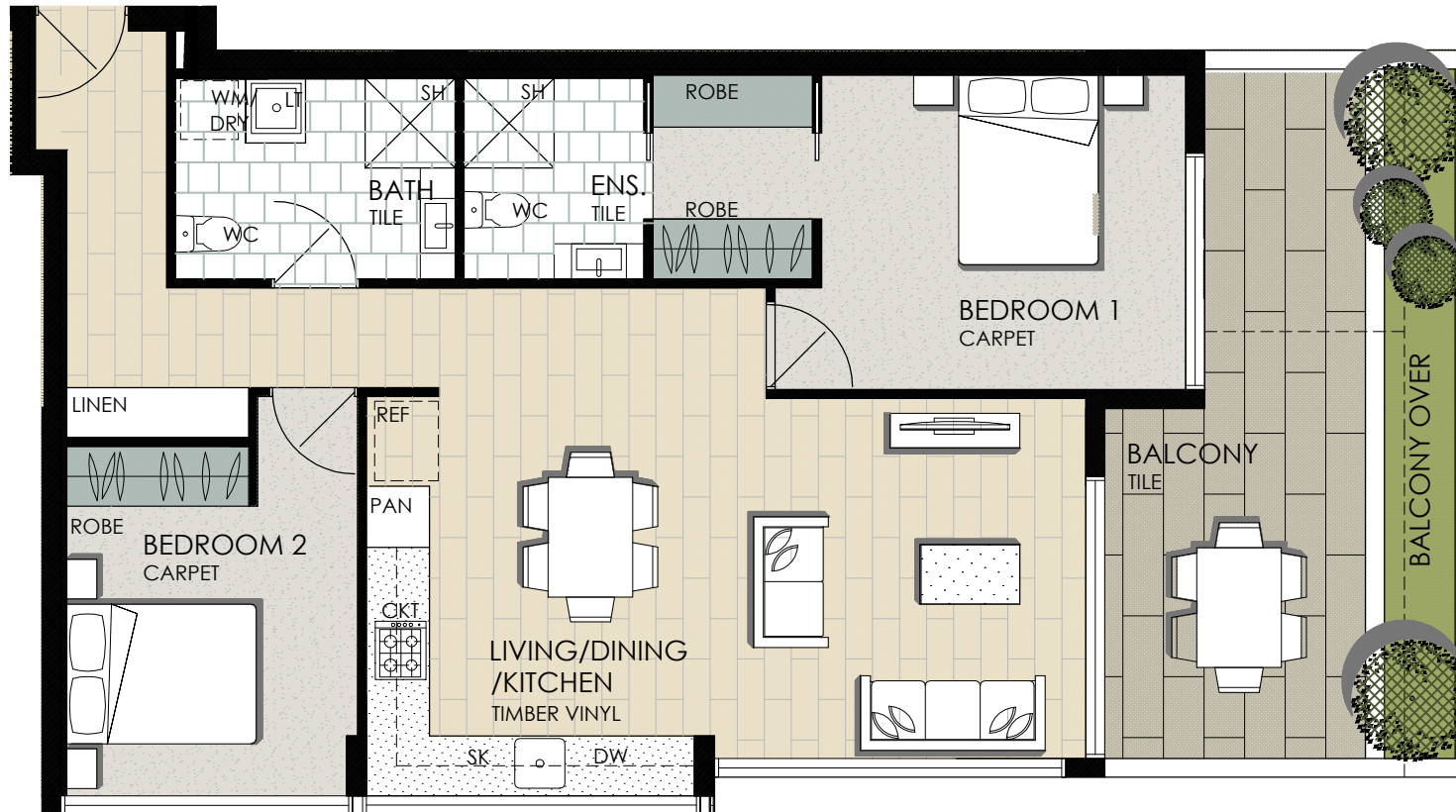


452-456 ENOGGERA ROAD ALDERLEY

2 BEDROOM UNIT TYPE 6

UNIT NO.:
LEVEL 2 : UNIT 14



2 BEDROOM, 2 BATHROOM

1 CARPARK

BALCONY + PLANTER

INTERNAL AREA 81.0m²

BALCONY AREA 24.0m²

INCLUDES PLANTER

TOTAL AREA 105.0m²

MASTER BEDROOM: 3.1 x 3.4 m

BEDROOM 2: 2.8 x 2.9 m

LIVING / DINING 6.5 x 3.6 m

LEGEND

AC	AIR CONDITIONING UNIT
CKT	COOK TOP
DW	DISHWASHER
LN	LINEN CLOSET
LDY	LAUNDRY
LT	LAUNDRY TUB
BR	BROOM CUPBOARD
PAN	PANTRY
REF	REFRIGERATOR
RB	WARDROBE
SCR	SUN SHADING SCREEN
SH	SHOWER
SH/BTH	COMBINED SHOWER BATH
STDY	STUDY
WC	TOILET
WM/DRY	WASHING MACHINE / DRYER
LC	LAUNDRY CHUTE

Locale
@ ALDERLEY
www.localeapartments.com.au

**LEITH
ARCHITECTS**

REVISION A

DISCLAIMER: This plan was prepared prior to construction of the project and is indicative only and not intended for identification purposes. Design changes, council approval and field survey may cause the floor areas and design of the apartment to differ from those shown on this plan. For a more accurate indication of individual apartment sizes consult the draft building format plan. The location of fixtures and fittings is subject to change without notice. Furniture, study fit outs and appliances shown are indicative only and are not included in the purchase price. Colours shown are not indicative of actual apartment finishes.